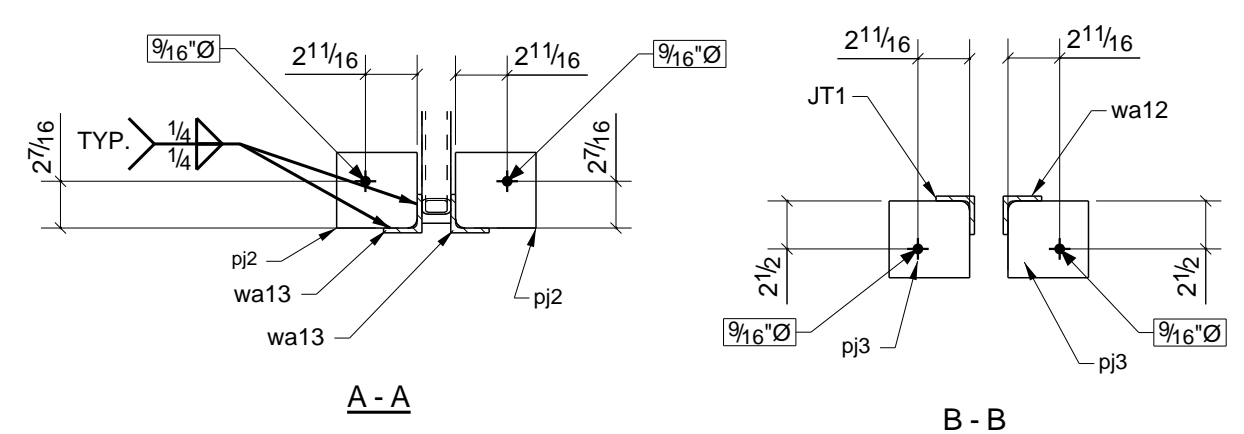
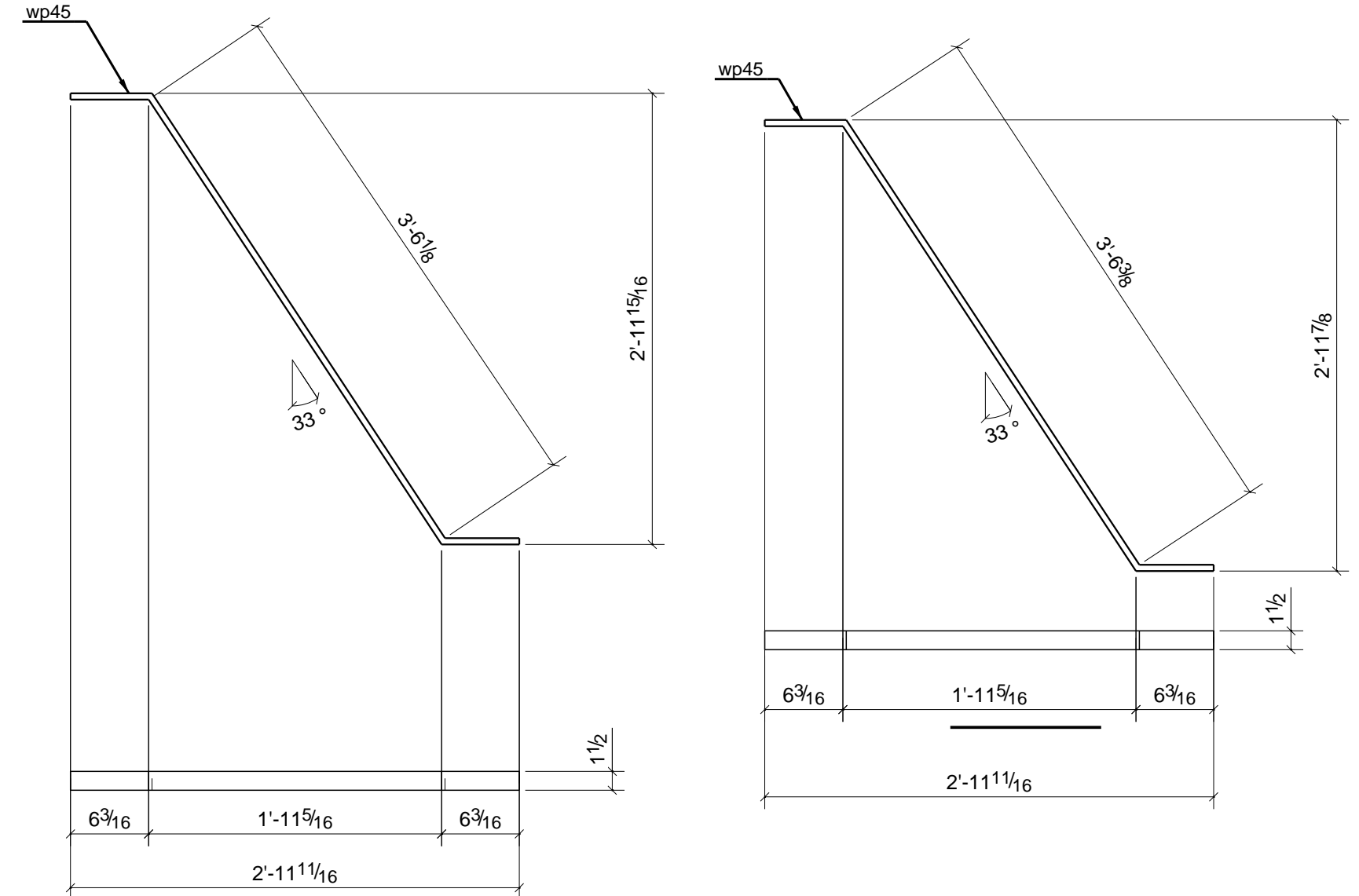
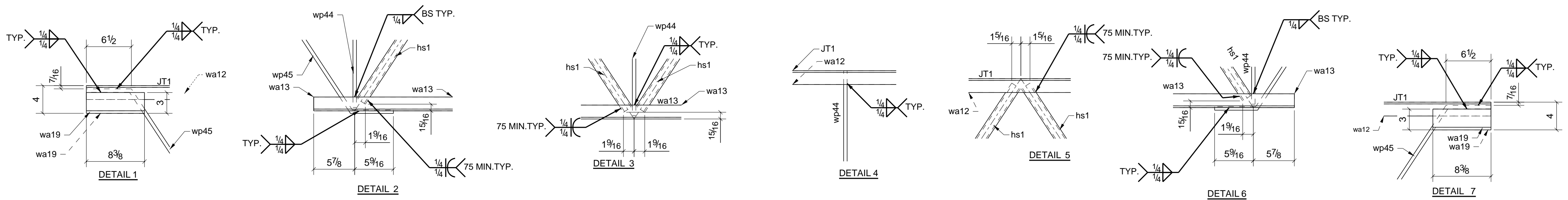


CAMBER=19mm



ONE - JOIST - JT1

BILL OF MATERIAL					
MARK	QTY	DESCRIPTION	LENGTH	WEIGHT	REMARKS
JT1	1	JOIST			SQ-2
JT1	1	L2X2X1/4	C=19mm 44'-4 3/4"	143	300W
hs1	20	HSS1-1/2X1-1/2X3/16	3'-4 3/16"	191	350W
pl2	4	PL1/4X3\"/>			
pl3	4	FL1/4X4"	0'-4 3/16"	5	300W
wa12	1	L2X2X1/4	44'-4 3/4"	143	300W
wa13	2	L2X2X1/4	40'-4 1/4"	259	300W
wa19	4	L3X2X3/8	0'-8 3/8"	17	300W
wp44	11	FL1/2X1\"/>			
wp45	2	FL1/2X1\"/>			

0	ISSUED FOR FABRICATION	
REV	DESCRIPTION	DATE
	DESCRIPTION	
	PROJECT NAME	
	DRAWN BY	
	DATE DRAWN	
	JOB No.	DRG No.
	#16-09	JT1

JOIST DESIGN
TOTAL FACTORED LOADS 612 lb/ft (8.9 kN/m)
CAMBER: 19mm